

Eagle | 5,223 Sq. Ft.



Photorealistic Architectural Rendering

Refined estate living with private owner's comfort, generous gathering spaces, and quiet upstairs retreat.



Photorealistic Architectural Rendering

This plan balances intentional zoning with everyday livability—anchored by a central great living space, a private owner's wing, and flexible secondary rooms for work, wellness, or media. The layout is clear and efficient, with strong indoor-outdoor connections that support both relaxed evenings and larger gatherings.

3 Bedrooms | 4.5 Baths | 3-Bay Garage

Hydendesigngroup.com | 210-342-4140 | MB@hydendesigngroup.com

Eagle | 5,233 Sq. Ft.

MARKET ADVANTAGES

- 3 Bedrooms / 4.5 Bathrooms
- 4 Living Areas
- 3-Bay Auto Storage (Garage)
- Overall: 134'-2" wide x 66'-10" deep
- Hosts who expect effortless entertaining.
- Owners who want a true main-level retreat.
- Families who need flexibility without compromise.

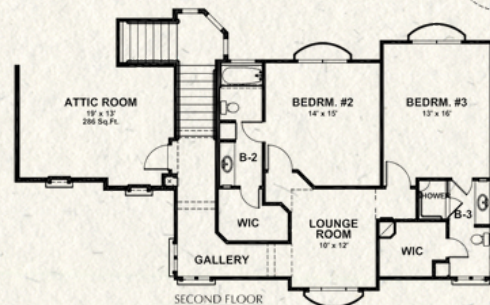
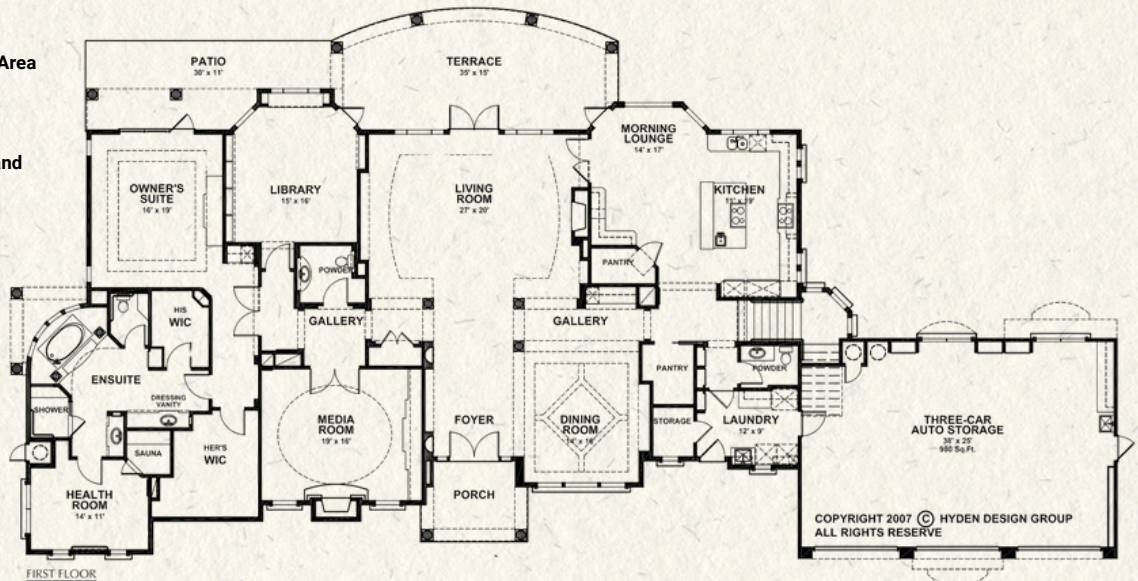
Consider adding this plan to your active lineup or adapting it to align with your current lot inventory.

A thoughtfully zoned luxury plan with a private owner's wing on the main level, supported by open, connected living spaces for daily comfort and entertaining. Flexible specialty rooms add adaptability, while secondary bedrooms upstairs pair with a dedicated lounge for separation and quiet. Designed for refined, functional living with clear circulation.

Available as designed or modified to fit lot conditions and target market.

Features

- Approx. 5223 Sqft. Heated and Cooled Area
- 3 Bedrooms / 4.5 Bathrooms
- 4 Living Area
- Gourmet Kitchen / Granite Countertops
- Open Floor Plan with Soaring Ceilings and Big Windows
- Elegant and Low Maintenance
- 3 Bay Auto Storage (Garage)
- 134'-2" Wide x 66'-10" Deep (Overall)



From the studio of
Hyden Design Group
www.hyden设计group.com
(210) 342-4140

© 2025 Hyden Design Group. One-time construction license only. Reproduction, reuse, or multiple builds prohibited without written consent.